

Our Lady of Grace
School



Annual Community Meeting

Tuesday 23 November 2021

Our Lady of Grace School
Faith and Wisdom

w – olg.wa.edu.au
e – enquiries@olg.wa.edu.au

Connect with us:



CATHOLIC EDUCATION
WESTERN AUSTRALIA

I have come that they may have life and have it to the full. John 10:10

Acknowledgement of Country

We acknowledge the traditional custodians of land on which we meet the Whadjuk People of the Noongar Nation.



Prayer

Lord, make me an instrument of your peace.

Where there is hatred, let me sow love;

Where there is injury, pardon;

Where there is doubt, faith

Where there is despair, hope;

Where there is darkness, light;

Where there is sadness, joy;

Prayer

O Divine master, grant that I may not so much seek to be consoled
as to console.

To be understood as to understand,

To be loved as to love,

For it is in giving that we receive,

It is in pardoning that we are pardoned,

It is in dying that we are born to eternal life.

Our Lady of Grace

All: Pray for us

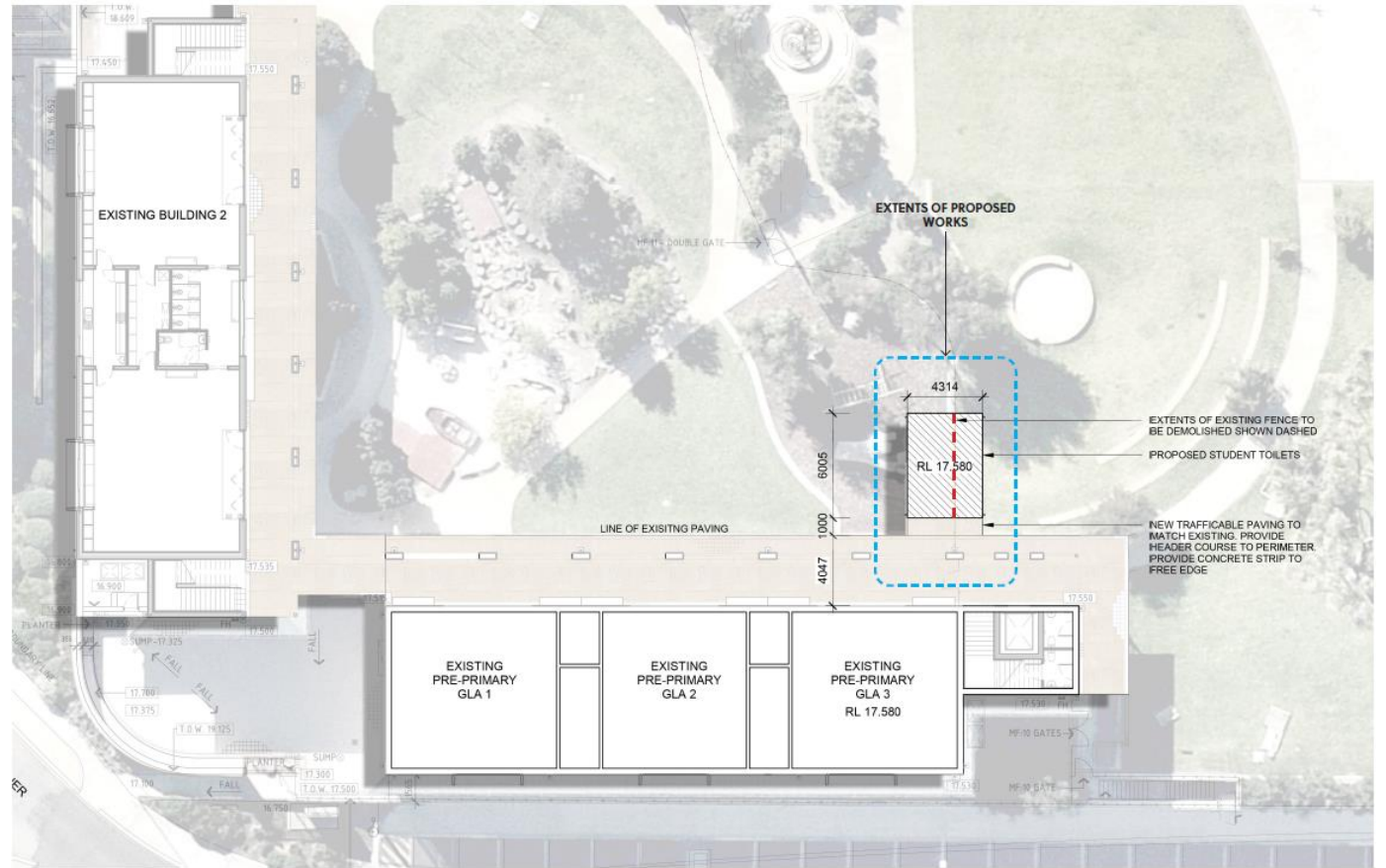
Agenda

- Welcome
- Acknowledgement of Country
- Prayer
- Agenda
- Principal Report
- School Advisory Council Report
- Financial Report
- School Board Election – Criteria for election (6.1)
- Announcement of names of the new members of the Board
- P&F President's Report
- P&F Financial Report
- P&F Election
- Announcement of P&F Election
- Thank you

Principal's Report – Feeling Good



Principal's Report – Functioning Well



Principal's Report – Doing Good for Others



School Advisory Council Report

School Advisory Council

- Previously known as School Board.
- Established to assist in the provision of effective Catholic Education.
- The Council acts in an advisory role to the Principal for finances, planning and policy development.
- The Council also has a critical role to play in promoting and supporting the ethos of Our Lady of Grace School.
- The Council is comprised of:
 - up to 6 elected Council Members
 - P&F Representative
 - Parish Representative
 - Ex-officio members: Principal, Assistant Principals, Parish Priest, and our Sisters of the Holy Family of Nazareth

Chairperson	Daniel Simpson
Deputy Chairperson	Adam Wheeler
Secretary	Suvas Lobo
Treasurer, Finance Committee Member	Scott Tanner
Finance Committee Member	Amanda Cumberbatch
Parish Representative	Daniel Kiely
Board Member	Beck Stanes
P&F Representative	Joe Simpson
Ex Officio	Michelle Lloyd
Ex Officio	Jacquie Hardwicke
Ex Officio, Principal	Gabrielle Doyle
Ex Officio, Parish Priest	Father Hyginus Ebede
Ex Officio	Sister Anita Litwin and Sister Helen Terba

School Advisory Council Report

- Elected Council members serve 2-year terms, to a maximum of 6 years.
- Monthly Advisory Council meetings held:
 - Update from Principal
 - Update on School's finances
 - Update on P&F Activities
 - Update from the Parish
- How do we support OLG?
 - Parent voice through the staff interview process
 - Finance Committee
 - Maintenance Committee
 - Advisory on major / minor works undertaken on school grounds
 - Act as another "school voice" in the wider community
- Two retirements from the Council this year:
 - Amanda Cumberbatch
 - Adam Wheeler

Chairperson	Daniel Simpson
Deputy Chairperson	Adam Wheeler
Secretary	Suvas Lobo
Treasurer, Finance Committee Member	Scott Tanner
Finance Committee Member	Amanda Cumberbatch
Parish Representative	Daniel Kiely
Board Member	Beck Stanes
P&F Representative	Joe Simpson
Ex Officio	Michelle Lloyd
Ex Officio	Jacque Hardwicke
Ex Officio, Principal	Gabrielle Doyle
Ex Officio, Parish Priest	Father Hyginus Ebede
Ex Officio	Sister Anita Litwin and Sister Helen Terba

Our Lady of Grace Strategic Plan

- Our Lady of Grace is currently completing year 2 of a 4 year Strategic Plan.

<https://olg.wa.edu.au/wp-content/uploads/2020/02/Strategic-Plan-brochure-.pdf>

- During the consultation process to create the Strategic Plan, it was the aim of the Council and School Leadership that the Plan was a “living document” and something we kept in mind and worked to every day.
- On a monthly basis, the Council reads the Principal’s Report with a view to map the school’s activities against the four areas of the Strategic Plan:
 1. Christ
 2. Empowering
 3. Transforming
 4. Compassion



CHRIST

We strive to live the Church's purpose for education; to advance the mission that is based on the Gospel of Jesus Christ.

Key Highlights Include:

- Sister Helen commencing at OLG as part of the Pastoral Care Team
- Sacrament Retreats for over 200 students
- Engaging parents and students via surveys, Uniforms, Communication
- Ensuring the voice of our children is heard via surveys, development of a Bullying Policy, engagement in changes to the school uniform and much more!

Christ

We strive to live the Church's purpose for education; to advance the mission that is based on the Gospel of Jesus Christ.

Focus on the Charism of the Sisters of the Holy Family of Nazareth in order to foster a Catholic community.

- * Caritas and Project Compassion are highlighted in our House Days, fundraising:
 - 51 Easter Egg hampers
 - 700 pairs of socks
 - \$1000 for LifeLine
 - 700 toiletry items
 - 70 Christmas Hampers
- * Whole School ANZAC Day Service
- * OLG supported Parish led Easter Egg hunt
- * Sister Helen commenced at OLG as part of our Pastoral Care Team, working 20+ hours and looking after 182 students.

A rich and deep relationship is developed and nurtured with the Our Lady of Grace Parish.

- * Parent faith formation information sessions for Sacraments
- * Parent/Child workshops for Sacraments
- * Eucharist, Reconciliation and Confirmation Retreats for over 200 children
- * Staff and parent participation in the school led Feast of the Assumption Mass

Survey of parents & grandparents to determine their strengths and wishes for the students.

Voice of the child:

- * Wellbeing Survey
- * Bullying Policy
- * Uniform Changes
- * Play options
- * Learning Environment
- * Year 6 School Camp Survey
- * IT Usage
- * Communication Survey

Our Lady of Grace School
With a Woman

EMPOWERING

We strive to ensure Catholic education is committed to excellence, continual transformation and meeting all Church and Government requirements.

Key Highlights include:

- Teachers took part in the Scitech Mathematics Problem Solving Professional Learning Opportunity.
- Staff participated in SCSA review of the Australian Curriculum with OLG teachers being invited to represent primary teachers in the Catholic System WA.
- Staff represented on Boards at CEWA include:
 - 2 x Lighthouse Math
 - 3 Digital Leadership
 - 1 x Wellbeing Leader
 - 1 x Early Years Leader
 - 1 x Middle Year Leader
 - 1 x Data Communication
 - 1 x CEWA Mathematic Framework Communication
- Staff led extra opportunities.

Staff at OLG give a considerable amount of their time above and beyond their classroom and school wide work. Some examples of extra opportunities provided for our children include;



- Lego club with Mrs Lloyd
- Gardening club
- Craft club – selection of House Day events
- Chess club @ lunchtime
- TOM – 5 teams in regional events, 1 in state final
- Robocup – 13 participants, classes held after school over a period of 6 weeks
- Library Monitors & Book Club
- STEM Club with 40 students over 2 hours per week
- One Big Voice
- Cluedunnit competition, 'The Inspectigators' were the 2021 Winners – 4 students completed 10+ hours with Mrs Fenlon over the course of a term.
- Orchestra/guitar ensemble
- Junior and Senior Choir
- Math extension
- Creative writing extension
- Bouldering
- Run Club – average of 50 students per week
- Surf Club
- Circus Club – 40 students per week



Empowering

We strive to ensure Catholic education is committed to excellence, continual transformation and meeting all Church and Government requirements.



Focus on Five Teacher Practices



Teachers from Year 2 and Year 3 have been a part of a Scitech Mathematics Problem Solving Professional Learning Opportunity this year and hosted the project lead from Scitech, at school.



Staff participation in SCSA review of the Australian Curriculum. OLG, representing primary teachers in the Catholic System, were thanked for contributing by the Director of Teaching and Learning.



Instructional Range was the focus of Professional Learning for all staff in 2021.



The Growth Action Plan (GAP) developed by a team of teachers over the past 14 months will be presented to staff next term. The plan is linked to the Five Teacher Practices and the Staff Wellbeing Strategy.



Staff representation on Boards at CEWA include: 2 x Lighthouse Math, 3 x Digital Leadership, 1 x Wellbeing Leader, 1 x Early Years Leader, 1 x Middle Year Leader, 1 x Data Communication and 1 x CEWA Mathematic Framework Communication.



Expand opportunities for all students to develop critical, creative and higher order thinking skills.

Staff at OLG give a considerable amount of their time above and beyond their classroom and school wide work. Some examples of extra opportunities provided for our children include;



- Lego club with Mrs Lloyd
- Gardening club
- Craft club – selection of House Day events
- Chess club @ lunchtime
- TOM – 5 teams in regional events, 1 in state final
- Robocup – 13 participants, classes held after school over a period of 6 weeks
- Library Monitors & Book Club
- STEM Club with 40 students over 2 hours per week
- One Big Voice
- Cluedunnit competition, 'The Inspectigators' were the 2021 Winners – 4 students completed 10+ hours with Mrs Fenlon over the course of a term.
- Orchestra/guitar ensemble
- Junior and Senior Choir
- Math extension
- Creative writing extension
- Bouldering
- Run Club – average of 50 students per week
- Surf Club
- Circus Club – 40 students per week



TRANSFORMING

We strive to be responsive to the diverse needs of students. We seek to provide access to Catholic education especially for the marginalized and disadvantaged.

Key Highlights:

- NAIDOC Week celebrations held.
- New Acknowledgement of Country Signage near reception, and consistent use at significant gatherings.
- 5-year maintenance plan completed and approved.
- New high-level working Groundsman employed to complete maintenance work.
- Canteen now available daily.
- Creation of the Physical Movement Specialist role.

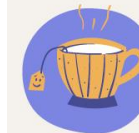
Transforming

We strive to be responsive to the diverse needs of students. We seek to provide access to Catholic education especially for the marginalized and disadvantaged.



Provide visual recognition of Aboriginal Culture and land in the school environment.

- * NAIDOC Week celebrations were held and were very successful. The week began with a prayer service and smoking ceremony. Lunchtime games, online story telling opportunities & classroom resources. Information was provided to parents and an educational video link provided to assist in their cultural competency.
- * New Acknowledgement of Country signage near reception
- * We include Acknowledgement of Country before prayer at all significant gatherings.



Develop a leadership and governance structure appropriate for a triple stream school.

- * High level working Groundsman employed to complete maintenance work
 - * 5 year maintenance plan document completed and approved
 - * Project for a new toilet block in the Early Years has been approved and works to commence shortly
 - * On site school canteen now operates daily
- Physical Movement Specialist employed to run before and after school activities. To date we have commenced a running club (over 100 in first week attended), bouldering with our year 5 group, surf club for our year 6's and most recently a Circus Club.

We acknowledge the traditional custodians of the land upon which we play, learn and grow, the Whadjuk People of the Noongar Nation, and pay our respects to their past, present and future.

COMPASSION

Central to our identity as a Christ-centred community are our partnerships with families, Parish and the wider community. We are a Catholic pastoral community that enhances parent and student engagement.

Key Highlights:

- Surveys sent to parents include Uniform, Highway Heroes, Bullying Policy, Learning Environment Committee.
- Parishioners invited to school events such as Christmas Carols and Nativity Plays.
- Fundraising for St. Vincent De Paul.
- Celebrating Mothers' Day and Fathers' Day.
- RoboCup and TOM programs run.

Compassion

Central to our identity as a Christ-centred community are our partnerships with families, Parish and the wider community. We are a Catholic pastoral community that enhances parent and student engagement.

Communicate to the Parish and wider community the unique qualities of Our Lady of Grace School.



- * Surveys sent to OLG Community as new projects evolve such as Uniform, Highway Heroes, Bullying Policy, Learning Environment Committee. In total over 650 parents were sent the surveys.
- * Review of how we communicate to our school community undertaken in November 2021 – sent to over 650 parents and caregivers
- * Invitation to school events extended to Parishioners, such as Christmas Carols and Nativity Play's
- * Fundraising event for St Vincent De Paul and the Lord Mayor's Fire Appeal (25/2) raised \$878 and over 400 non-perishable food items for St Vincent De Paul. Data regarding our contribution to the Parish St Vincent De Paul chapter in 2021 include;
 - Over 400+ Easter Eggs with 51 family baskets and over 20 individual large egg gifts for families donated
 - A weekly basket of food from Year levels attending Mass on Wednesday's
 - 780 individual items of food collected during House Days
 - 700 toiletry items collected during Wellbeing Day
 - Staff Christian Service opportunity provided a dozen homecooked and frozen meals for St Vincent De Paul.

Prioritize the safety and wellbeing of students.



- * Employment of Physical Movement Specialist who has since introduced various initiatives such as run club, surfing, brain breaks, bouldering and circus club
- * Celebrating Mother's Day and Father's Day with different heartfelt experiences. Over 300 dads attended Father's Day and 400 mugs supplied to Mum's
- * Learning enrichment activities such as RoboCup and TOM (Tournaments of the Mind)
- * Introduction of Highway Heroes and Bullying Policy and the resources purchased for parents to read at their leisure available in reception



Finance

- It is the duty of the Council to provide advice on the Principal on the financial running of the school.
- Ways this is undertaken:
 - Monthly Update from Treasurer on School's Financial Position
 - Involvement in the Finance Committee, and the preparation of Budgets
 - Review of Budget prior to submission to CEWA
- Broadly, we face two main challenges:
 - OLG is rapidly taking on the expenses of a Three Stream school (3 classes per year) without the corresponding enrolments coming in at the same pace.
 - Changing levels of funding from CEWA and Government, a reduction of 2.3% in 2020 and 7.9% in 2022 State funding.
- We aim to be financially responsible while still achieving the outcomes we want for our children and making Our Lady of Grace a destination of choice for new families to our community.
- The school's finances will be covered in greater detail by Scott Tanner, Treasurer.

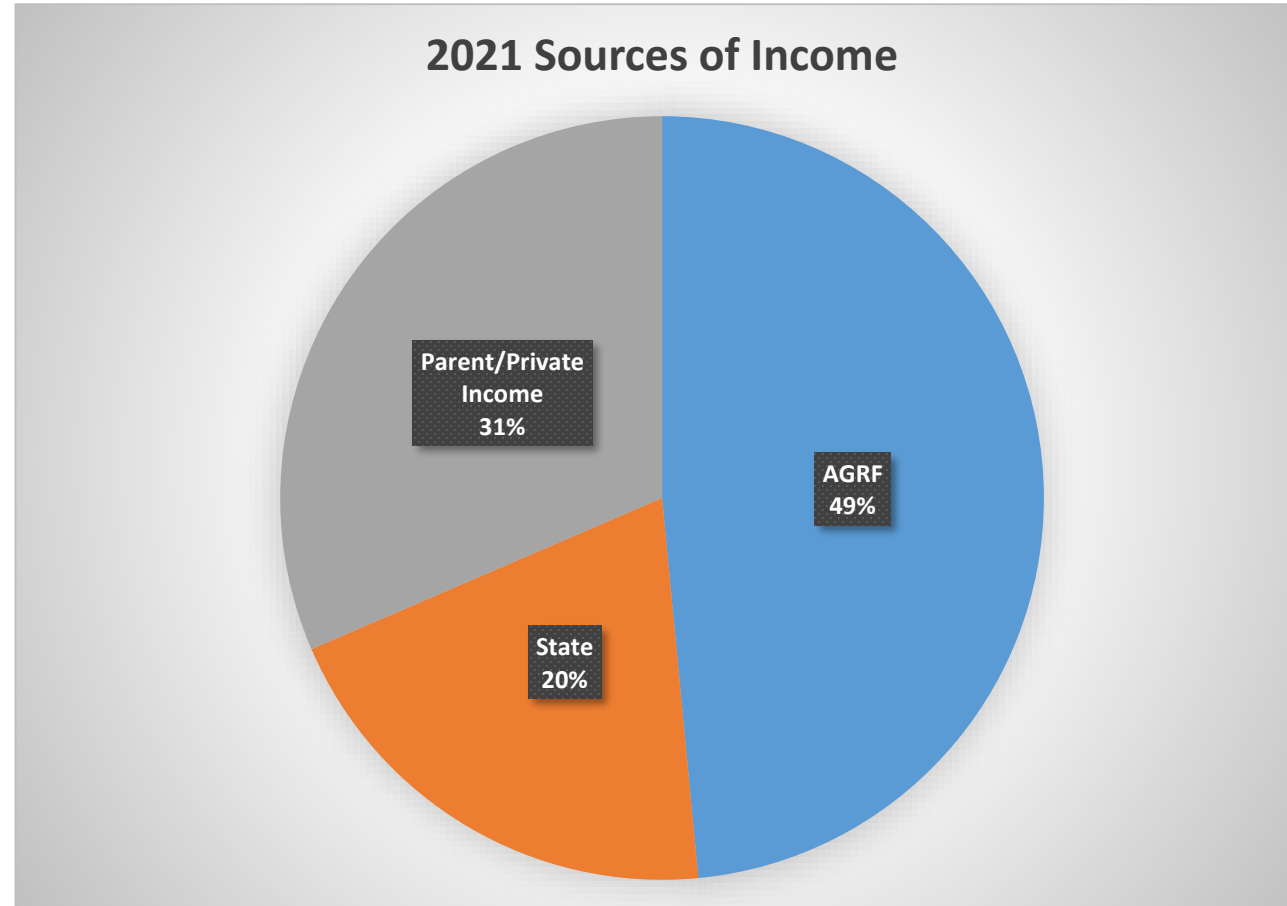
School Advisory Council Report

Finance

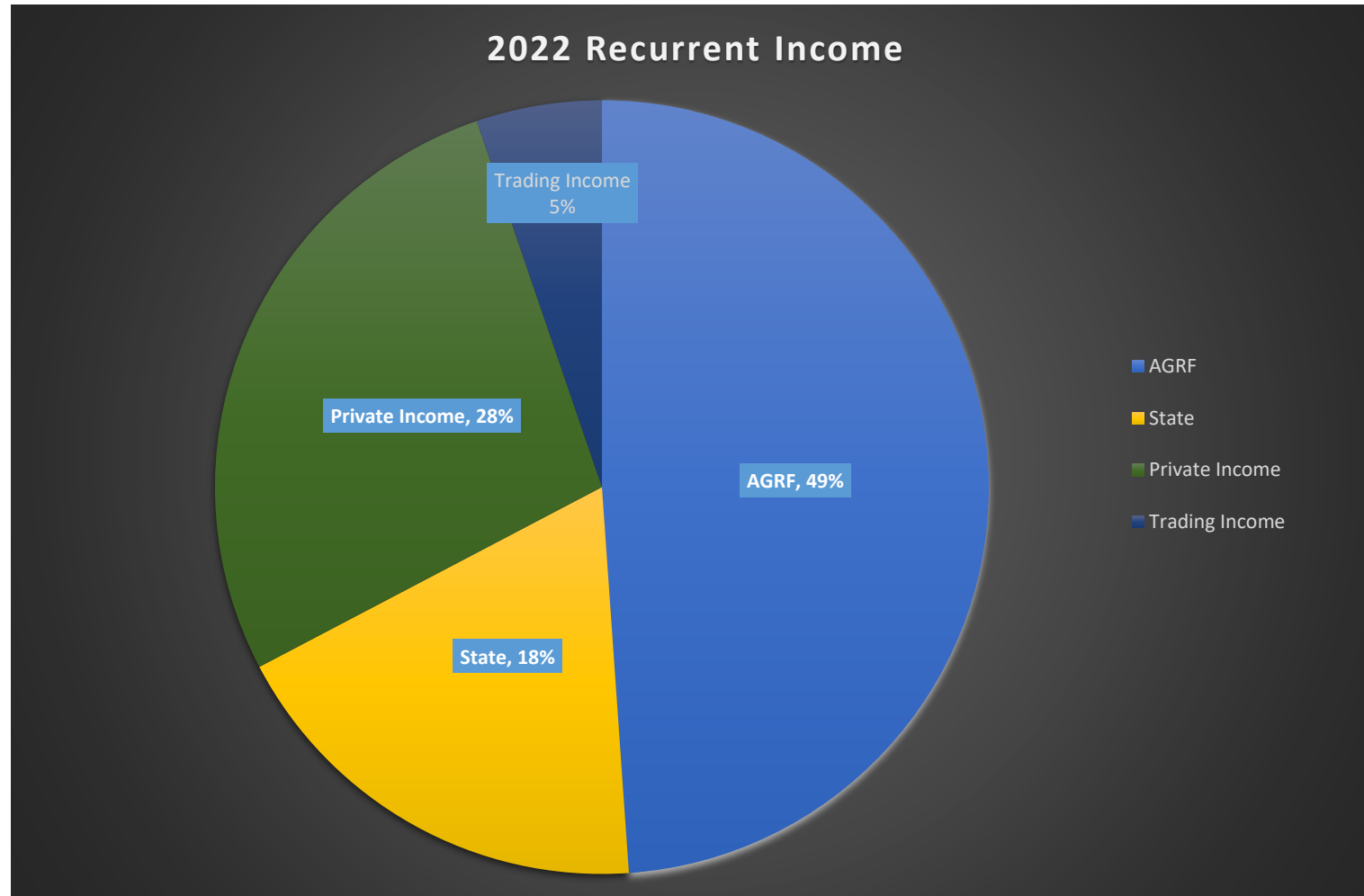
School Board Financial Report

Budget Summary (as per CAS)	
Recurrent Income	6,282,460
Recurrent Expense	6,815,240
RECURRENT RESULT	(532,781)
Capital Income	520,790
Capital Expense	612,321
CAPITAL RESULT	(91,531)
Trading Activity Income	347,520
Trading Activity Expense	287,459
TRADING RESULT	60,061
TOTAL SURPLUS/(DEFICIT)	(564,251)
Provision	IB
Opening Bank Balance 01/01/2022	470,000
Estimated Final Cash Balance 31/12/2022	311,182
Estimated Cash Result	(158,818)

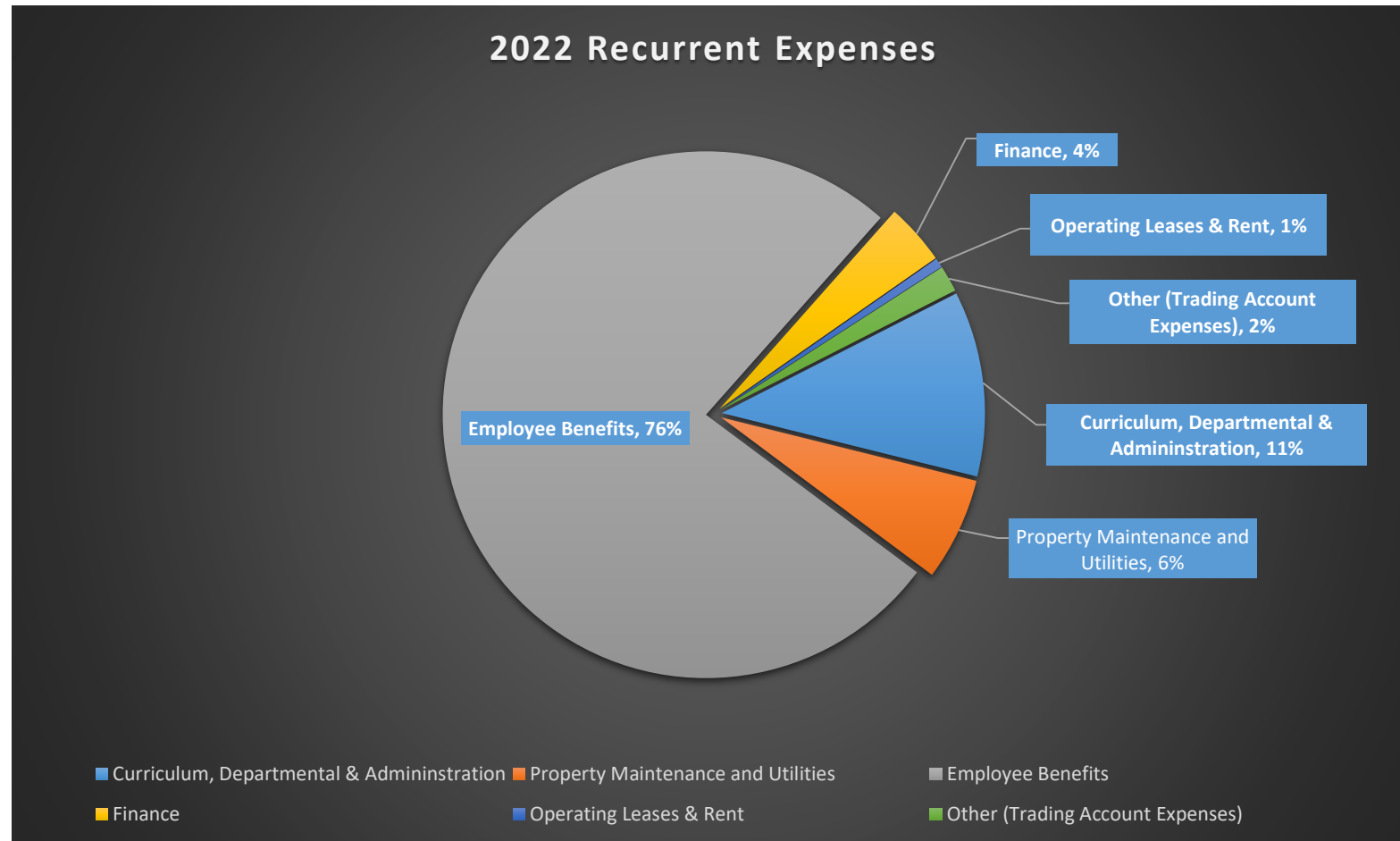
School Board Financial Report



School Board Financial Report



School Board Financial Report



Membership of the Advisory Council

- 6.1 – Advisory Council membership conditions are:
 - A commitment and desire to promote Catholic education and give service to the Catholic School Community;
 - A commitment to the safety, wellbeing and pastoral care of all students and staff;
 - An ability to work cooperatively and constructively with the Principal, school leadership team and all other members of the Advisory Council;
 - The possession of skills, competencies and experience that are reflective of, relevant and beneficial to the Catholic School Community; and
 - A sufficiency of time to devote to Advisory Council duties.

Membership of the Advisory Council

- Renomination:
 - Daniel Simpson - Chairperson
 - Suvas Lobo – Secretary ([Speech](#))

- New Nomination:
 - Daniel Kiely
 - Damien Millen

P&F President Report

OLG P&F AGM 2021

P&F Executive Committee Year in Review



Major Achievements ...

- ★ Strengthened the interest and commitment from key OLG community stakeholders:
 - ☑ Gabrielle Doyle, AP's, School Board and Teachers
 - ☑ Newly formed P&F Executive team
 - ☑ Business Community Partners
- ★ Re-secured Business Community Revenue
- ★ Consistent and relevant Marketing & Communication ... School Newsletter and P&F Facebook group



Key Deliverables for 2021 ...

🔴 3 Significant Major Initiatives:

- ☑ Business Community
- ☑ Basketball Court Resurfacing Project
- ☑ School Calendar

🔴 Business as usual Key Activities:

- ☑ Weekly Newsletter Updates
- ☑ Monthly P&F Meetings
- ☑ Parents Event in July
- ☑ Mother's Day Gift & Father's Day Breakfast



P&F Focus and Work in Progress ...

- Induction and engagement of early years parents
- Volunteers to lead and coordinate events in 2022
- P & F Operations (Meetings, Event Management, etc)
- Imbed our new recycling initiative as the school moves to no single use plastics
- Presentation of next major project being planned by the Environment Committee

P&F Business Community Sponsors

THANK YOU FOR YOUR ONGOING SUPPORT

PLATINUM SPONSORS



GOLD SPONSORS



BRONZE SPONSORS



P&F Treasurer's Report

P&F Treasurer's Report

Bank Reconciliation & Balance



	\$
Bank Balance as at 30 Sept 2020	105,551.55
Add: Cash not banked	0.00
Cash Book Balance as at 30 Sept 2020	105,551.55
Add Receipts 1 Oct 2020 - 30 Sept 2021	98,947.21
Less Payments 1 Oct 2020 - 30 Sept 2021	(111,732.54)
Cash Book Balance as at 30 Sept 2021	92,766.22
Bank Balance as at 30 Sept 2021	92,766.72
Less Outstanding committed funds	(13,400.00)
Available funds as at 30 Sep 2021	79,366.72
Net Cash utilisation for the 12 Months	26,184.83

P&F Treasurer's Report

Major Outgoing Payments



	2021	2020
Donations to School	(\$97,254)	
Mother Foundress Day Nov20	(\$4,800)	
OLG Calendar	(\$3,375)	
P&F Quiz Night Expenses	(\$2,848)	
Mothers Day Morning Gifts	(\$2,399)	(\$1,011)
Fathers Day 2020 & 2021	(\$2,132)	
Gifts	(\$108)	(\$730)
Fathering Project		(\$491)
Insurance	(\$512)	(\$502)
Fete 2019		(\$11,508)

P&F Treasurer's Report

Major Outgoing Payments



Summary of Donations	2021	2020
Basketball Court Resurfacing	(\$83,287)	
Learning Resources for STEM - Spheros	(\$5,000)	
Loose Parts Shed & School stream app	(\$3,612)	
PA System	(\$1,980)	
Calendar 2021 Gift for Parents	(\$3,375)	

Summary of Committed Donations	2021
Athletics carnival uniforms	(\$4,500)
Art for house day	(\$1,600)
Artworks for the front fence	(\$2,000)
PE Specialist Movement	(\$2,500)
P&F Quiz Night outstanding exp.	(\$500)
Grad book 2021 Receipts for printing	(\$2,300)

P&F Election

- Renomination:
 - Joe Simpson
 - Alison Newbold
 - Andrea Romeo
- New Nomination:
 - Andrew Yoong



Announcement of the P&F Election



OLG Staff



Prayer

Father, thank you for all the marvelous things you have done today.

Thank you for your love that you have revealed to us,

And for the love that we share together as your body.

We pray for all the words that you have sown into our hearts this day.

Watch over them, protect them.

Prayer

May they take root and produce wonderful things,

Things of beauty and great blessings to many.

And as we leave this place now, thank you that you walk with us.

May we be alert to your promptings And live in your endless love.

For yours is the kingdom, the power and glory In this age and
forevermore.

Amen.

Thank you OLG Community

Our Lady of Grace
School



Our Lady of Grace School

Faith and Wisdom

Our Lady of Grace School
Faith and Wisdom

w – olg.wa.edu.au
e – enquiries@olg.wa.edu.au

Connect with us:



CATHOLIC EDUCATION
WESTERN AUSTRALIA

I have come that they may have life and have it to the full. John 10:10